




BELMOR
 SPACIOUS LIVING, CLASSIC DESIGN

With a fresh new look for 2019, the Belmor is where open-plan living meets homely comfort. Our most spacious open-plan design to date features two entrances, including an outlook door as standard, and a floor space that naturally flows through the different areas.

The colours are inspired by modern greys and yellows, softened to create a classic timeless look. Plus, with a great list of standard and optional features – the Belmor provides a modern getaway with a touch of class.



MAIN FEATURES

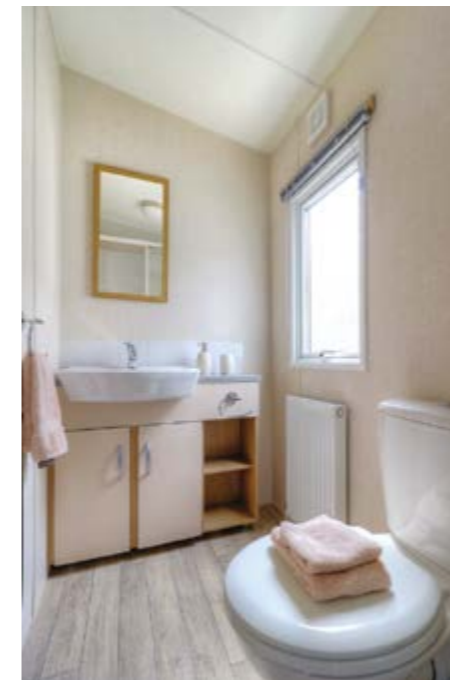
- Outlook front doors (only on front lounge layouts)
- Modern electric fire
- Externally vented cooker hood with light
- Coffee table
- Close-coupled ceramic toilet/s with dual flush
- Vaulted ceilings throughout
- Steel pantile peaked insulated roof
- Voile curtains to most windows
- Domestic gutters with rainwater fall pipes
- Galvanised corner steadies & tow bar with front and rear use
- Colour co-ordinated lounge scatter cushions
- TV point to master bedroom
- External light
- Free standing under counter fridge
- USB charging points to lounge & bedrooms
- LED lamps to most light fittings
- Bathroom fan
- 6'3" beds in bedroom 2

POPULAR OPTIONAL EXTRAS

Lifestyle pack:

- ▶ uPVC double glazing with Low-E glass
- ▶ Combi boiler central heating with room thermostat control
- ▶ Integrated fridge/freezer
- ▶ Integrated microwave

- Environmental exterior with colour co-ordinated uPVC windows & doors
- Fully galvanised or pre-galvanised chassis
- Choice of external claddings in various colours



LAYOUTS

For symbol key see page 23



▲ BELMOR 33, 2 BEDROOMS



▲ BELMOR 36, 2 BEDROOMS



▲ BELMOR 38, 2 BEDROOMS



▲ BELMOR 39, 3 BEDROOMS